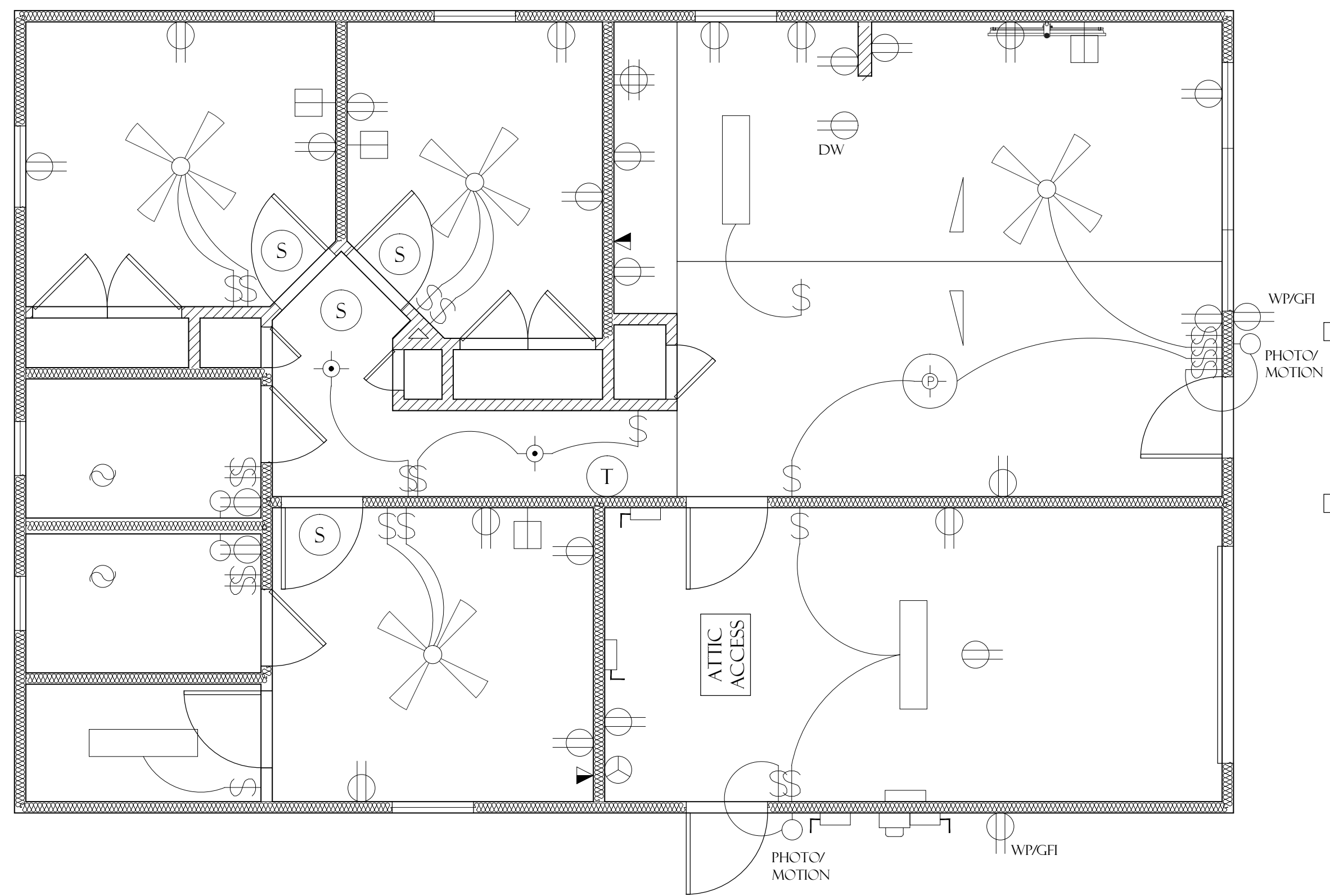
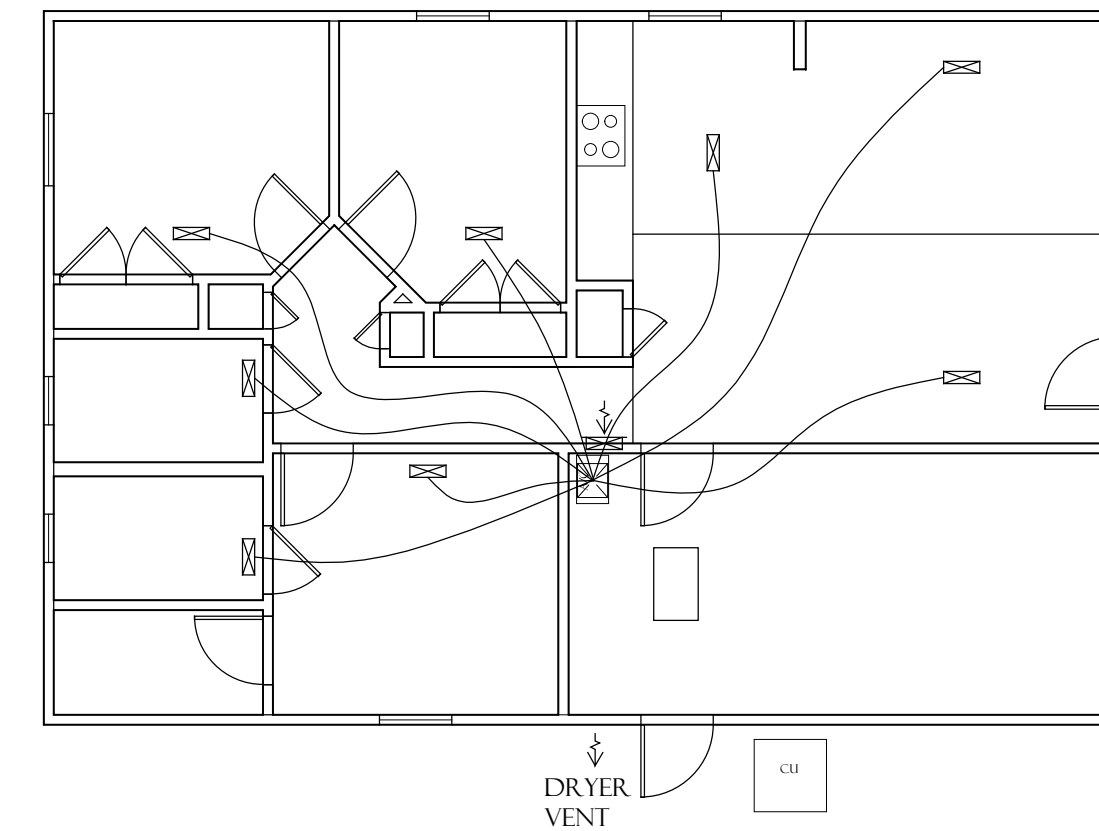


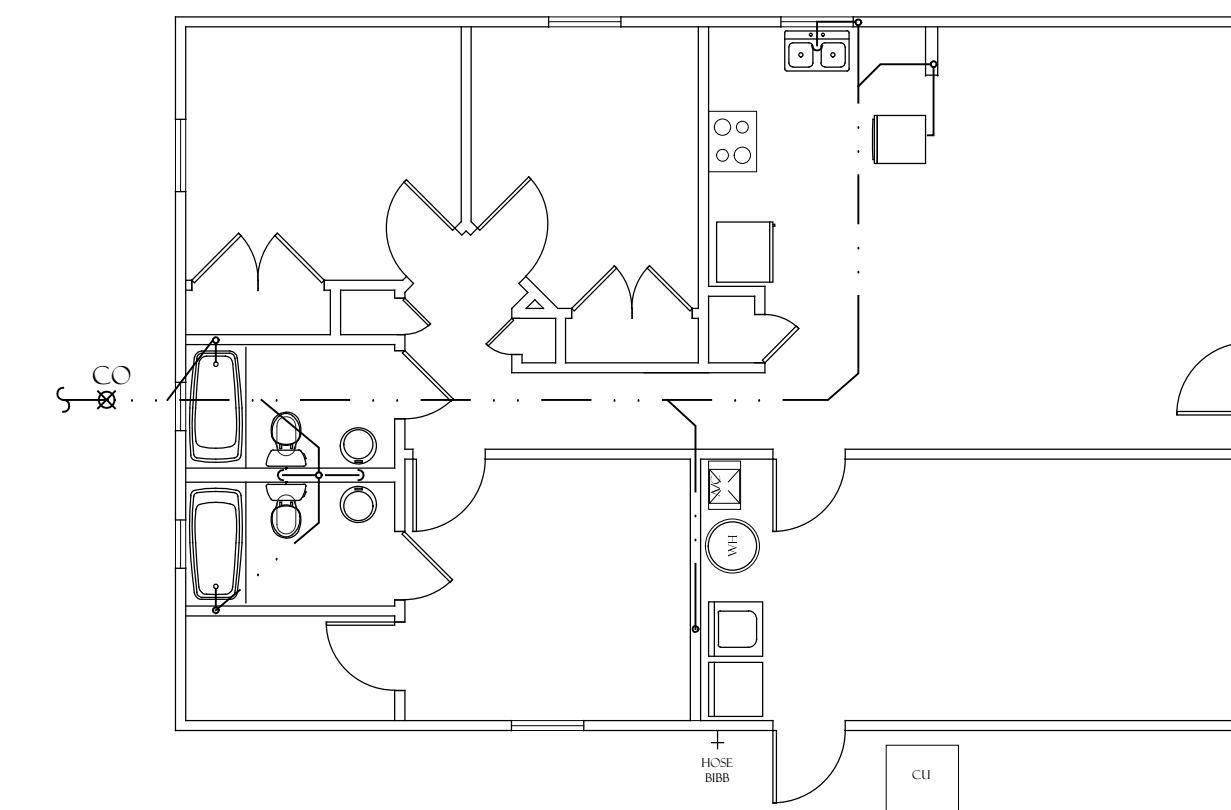
**1 Floor Plan - Three Bedroom/ Two Bath (Note: Only (1) three-bedroom accessible house will be constructed)**  
Scale: 1/4" = 1'-0"



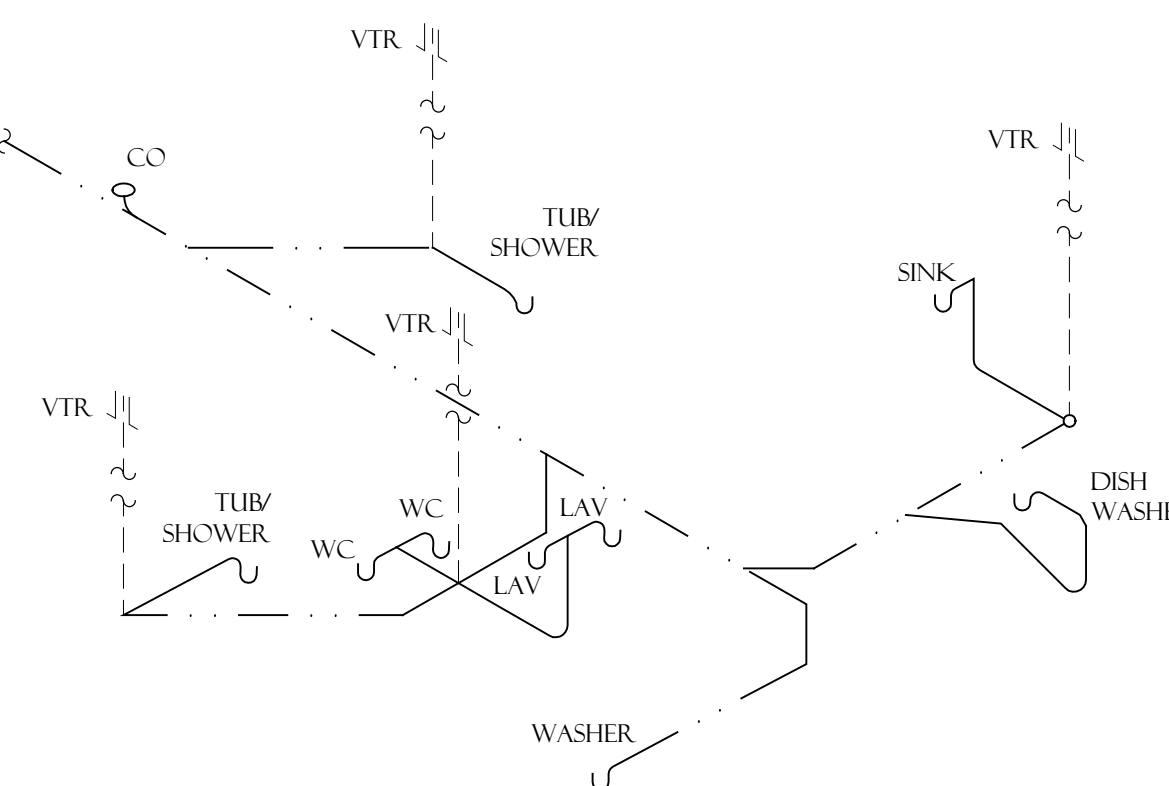
**2 Reflected Ceiling Plan**  
Scale: 1/4" = 1'-0"



**3 Mechanical Plan**  
Scale: 1/8" = 1'-0"



**4 Plumbing Plan**  
Scale: 1/8" = 1'-0"



**5 Plumbing Riser**  
Scale: NTS

**FLOOR PLAN LEGEND:**

- GWB ON 2X4 STUD FRAMING AT 16" O.C. (SEE 1/A410)
- GWB ON 2X4 STUD FRAMING AT 16" O.C. WITH INSULATION AS SCHEDULED (SEE 2/A410)
- WALL TYPE, SEE SHEET A410
- OPENING TYPE, SEE SHEET A300

**FINISH AND TRIM NOTES:**

- VINYL FLOORING:**
- 12" X 12" VINYL COMPOSITE TILE, LUXURY VINYL TILE (12 MIL WEAR LAYER), OR LINOLEUM COLOR SHALL BE SELECTED FROM FULL RANGE OF STANDARD COLORS.
  - FLOORING SHALL BE ADA COMPLIANT AND SLIP RESISTANT
  - EXTEND TILE FULLY UNDER KITCHEN AND VANITY CABINETS WITH REMOVABLE BASES AT ACCESSIBLE UNITS.
- WALL TILE:**
- 6" X 6" EQUAL TO DAL TILE, SEMI GLOSS, ON DURI ROCK.
  - ALTERNATE: PROVIDE FIBERGLASS TUBSHOWER, AS SCHEDULED.
- WALL BASE:**
- PAINT GRADE WOOD, COLONIAL STYLE
- CLOSET SHELVING:**
- WIRE SHELVING, EQUAL TO CLOSET MAID WITH SHELF (MAX HEIGHT 48" AFF), AND HANGING ROD.
  - AT LINEN CLOSET AND PANTRY PROVIDE 5 SHELVES, 18" DEEP, CLOSE-KNIT VINYL-WIRE SHELVING.
- WINDOW TREATMENT:**
- HORIZONTAL VINYL BLINDS EQUAL TO GRABER AT ALL WINDOWS.
- NOTES:**
- MOISTURE TEST CONCRETE SLAB/FLOOR PRIOR TO FLOORING INSTALLATION. MITIGATE MOISTURE CONTENT AS REQUIRED PER FLOORING MANUFACTURER'S RECOMMENDATIONS.
  - SEE A410 FOR GYPSUM BOARD AND INTERIOR PAINT NOTES.

NOTE: CONTRACTOR SHALL PROVIDE COMPLETE SYSTEM DESIGN DRAWING AND ENERGY CALCULATIONS.

**REFLECTED CEILING PLAN LEGEND:**

- 1X4 F SURFACE MOUNTED FLUORESCENT FIXTURE EQUAL TO PROGRESS LIGHTING WITH HIGH EFFICIENCY CFL OR LED LAMPS
- DECORATIVE PENDENT MOUNTED FIXTURE EQUAL TO PROGRESS LIGHTING WITH HIGH EFFICIENCY CFL OR LED LAMPS
- SUPPLY GRILLE
- RETURN GRILLE
- AIR CONDITIONER (SEE H EFFICIENCY RATING OR BETTER)
- DUPLEX OUTLET
- DUPLEX OUTLET, MOUNT AT 42" AFF
- GROUND FAULT INTERRUPTED OUTLET
- QUADPLEX OUTLET
- SURFACE MOUNTED CAN FIXTURE EQUAL TO PROGRESS LIGHTING WITH HIGH EFFICIENCY CFL OR LED LAMPS
- WALL MOUNTED INCANDESCENT FIXTURE EQUAL TO PROGRESS LIGHTING WITH HIGH EFFICIENCY CFL OR LED LAMPS
- EXHAUST FAN ENERGY STAR CERTIFIED
- CEILING FAN EQUAL TO HUNTER WITH 52" BLADE SIZE WITH KIT (ENERGY STAR CERTIFIED)
- EXIT SIGN
- DATA/TELEPHONE
- CATV/SATV
- THERMOSTAT
- SMOKE DETECTOR
- WALL SWITCH

- NOTES:**
- PROVIDE VAPOR PROOF FIXTURES IN SHOWER CEILING.
  - ELECTRICAL OUTLETS SHALL BE NO LOWER THAN 15" AFF. (BOTTOM OF OUTLET) AND NO HIGHER THAN 48" AFF. (TOP OF OUTLET).
  - OPERABLE CONTROLS AND SWITCHES (INCLUDING LIGHT SWITCHES AND THERMOSTATS, ELECTRICAL PANELS, AND BREAKER PANELS) SHALL BE NO HIGHER THAN 48" ABOVE FINISHED FLOOR.

PROJECT LOCATION:

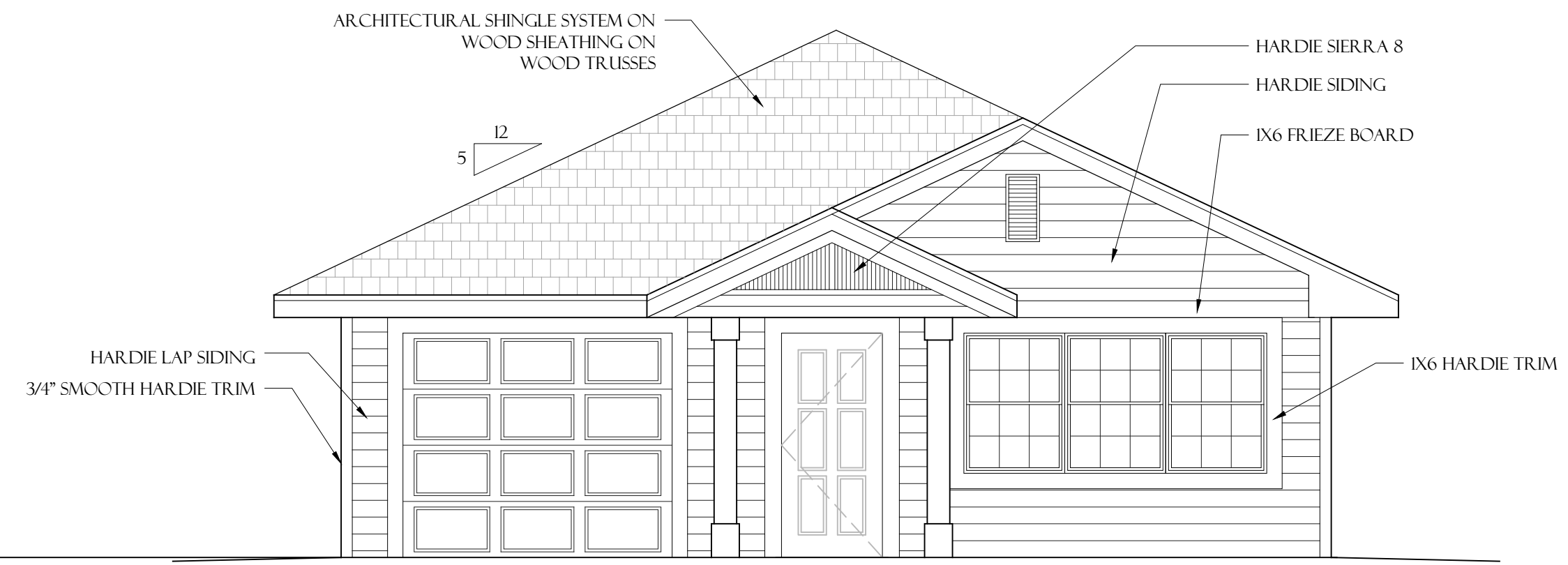
REVISED 04.08.2015  
REVISED 04.06.2015  
JANUARY 6, 2015  
100% CONSTRUCTION DOCUMENTS

FLOOR, CEILING PLAN AND NOTES

**A1.01**



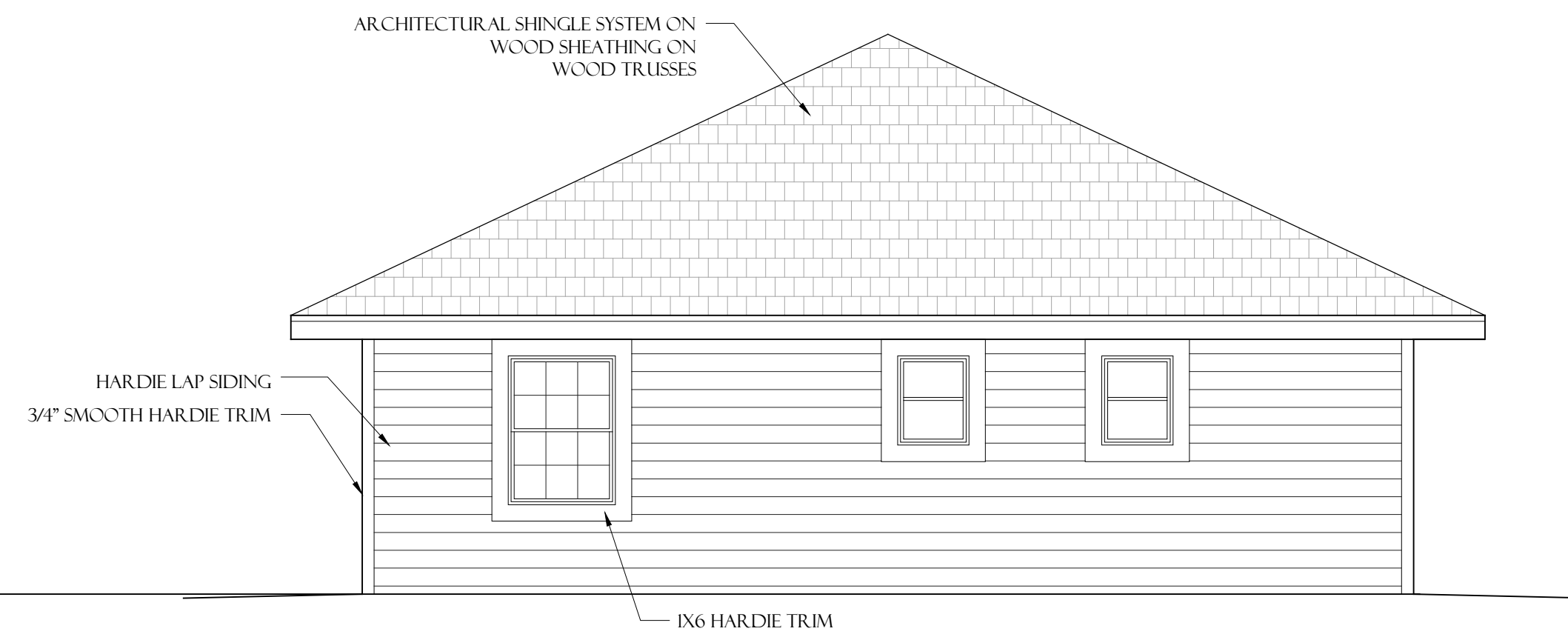
**1 Side Elevation**  
Scale: 1/4" = 1'-0"



**2 Front Elevation**  
Scale: 1/4" = 1'-0"



**3 Side Elevation**  
Scale: 1/4" = 1'-0"



**4 Rear Elevation**  
Scale: 1/4" = 1'-0"

**ELEVATION NOTES:**

1. PROVIDE MINIMUM 6" ADDRESS NUMBERS ON FRONT ELEVATION, VISIBLE FROM THE STREET.
2. SEE A210 FOR SECTIONS AND MATERIALS.

REVISED 04.08.2015  
REVISED 04.06.2015  
JANUARY 6, 2015

100% CONSTRUCTION DOCUMENTS

EXTERIOR ELEVATIONS

**A2.01**